

Ecological Footprint

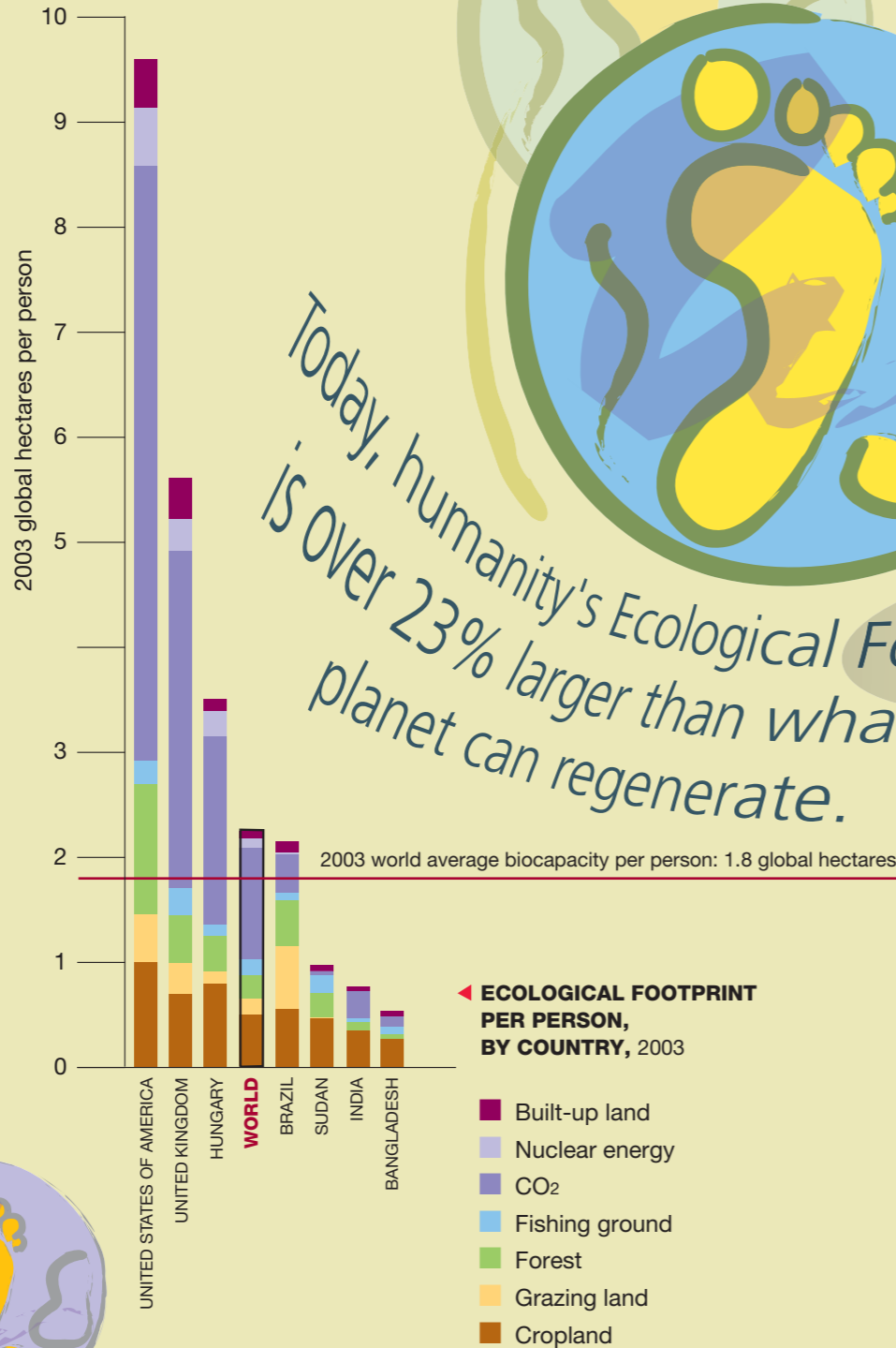
The Ecological Footprint is a measure of the 'load' imposed by a given population on nature. It represents the land area necessary to sustain current levels of resource consumption and waste discharge by that population.

>> In order to live, we consume what nature offers. Every action impacts the planet's ecosystems. This is of little concern as long as human use of resources does not exceed what the Earth can renew. But are we taking more?

Today, humanity's Ecological Footprint is over 23% larger than what the planet can regenerate. In other words, it now takes more than one year and two months for the Earth to regenerate what we use in a single year. We maintain this overshoot by liquidating the planet's ecological resources. This is a vastly underestimated threat and one that is not adequately addressed.

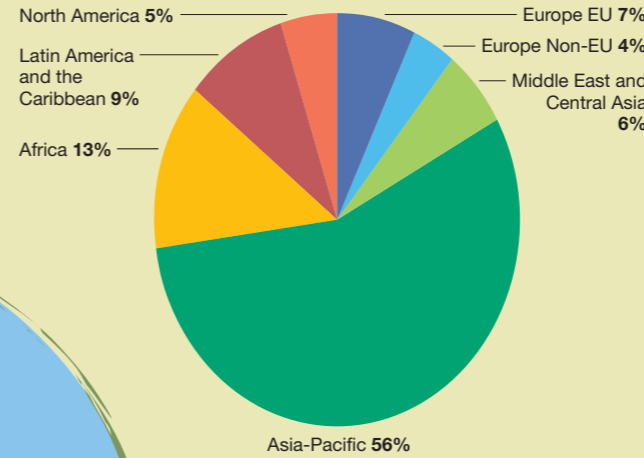
By measuring the Ecological Footprint of a population (an individual, a city, a nation, or all of humanity) we can assess our overshoot, which helps us manage our ecological assets more carefully. Ecological Footprints enable people to take personal and collective actions in support of a world where humanity lives within the means of one planet.

...and livable planets are hard to find!

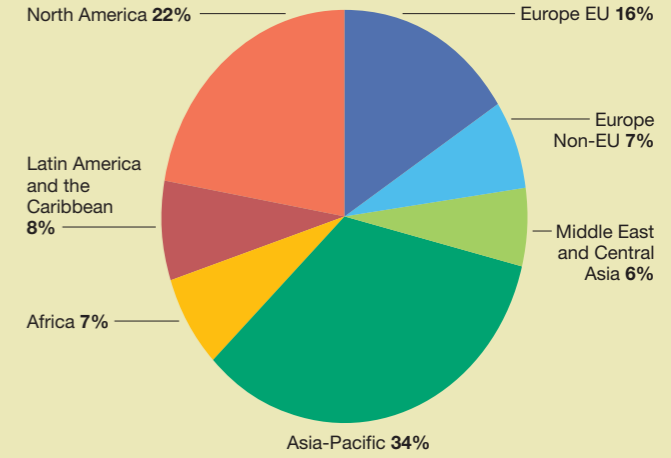


Today, humanity's Ecological Footprint is over 23% larger than what the planet can regenerate.

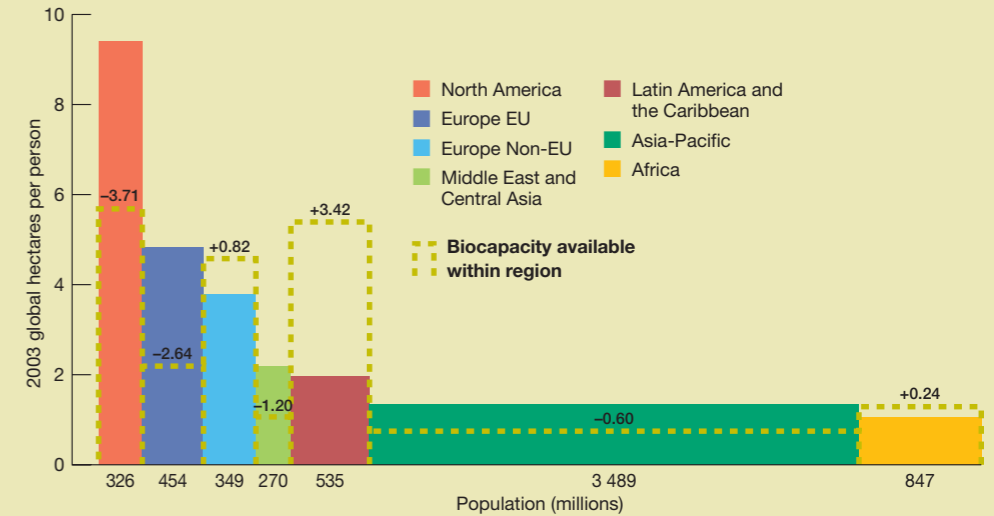
GLOBAL POPULATION BY REGION



ECOLOGICAL FOOTPRINT BY CURRENT REGIONAL USE



ECOLOGICAL FOOTPRINT AND BIOCAPACITY BY REGION, 2003



ENDING GLOBAL OVERSHOOT

